

Exploration of Higher Dimensional State Through the Termites Habitats

Felix Mudiappan*

Imayam College of Engineering, Kannanur, Trichy, India

Abstract

In this paper, the author explore the presence of higher dimensional state (HDS) from the construction of known faces by the termites. If one sees the properties of termites, they are less intelligent than humans are, and not capable of recognizing the faces. This means they themselves are not constructing the known faces; some HDS in invisible form only helps or controls them. With this paper the philosophical idea in metaphysics has got the proof of existence of HDS and a possibility for a perfect system with anything possible by HDS. The possibility of fast evolution has a proof here.

Keywords: Higher dimensional state, perfect system, termites.

1. Introduction

Images of animals and known and unknown human faces are being constructed by termites. How do termites know the known and unknown human faces? Another examples include, known shapes on cloud, diffusion of human known face on wall by rainwater diffusion and strange images constructed by some sand dwellers. All these shows information is passed on to us. Who is behind? Who is doing this? Have termites got that intelligent? Or how particles and fundamental forces adjusting to draw known human faces? It is evident that the movement of termites being controlled by some hidden forces known as HDS. In the same way, movement of particles and fundamental forces are controlled by some forces. These can be explained with the proofs below. The examples or experimental proof or results given in section 3 compare the real image with that of termites making, proving the existence of higher dimensional states. Here each image has to be viewed in multiple angles or directions to get different information from a single image.

Everything in this universe should have a purpose. Why should the termites or non-living beings (clouds) express the known shapes to humans? The purpose can be said as a kind of evolution or adaptation, that is, the intelligent of termites has evolved. As evolution or adaptation has a purpose, the termites constructing the homes with definite known shapes and clouds forming definite shapes have purposes. One thing has to evolve keeping reference to something. For

*Correspondence author: Felix Mudiappan, Imayam College of Engineering, Kannanur, Trichy, India.
E-mail: felix.alex2001@gmail.com

example, the head of giraffe evolved with respect to the height of trees. Also trees developed stings with respect to animals eating its leaves.

So here, what is the reference or basis that the termites, clouds, or rainwater on walls should form known shapes to humans? Science says from Ameba living beings formed. From the Big bang theory, on-living beings formed. Then living beings formed after billions of years of Big bang. Evolution is the very slow process, which the science supports. In order the souls with certain dimensions like humans and animals (souls, particles and fundamental forces combination, say as “Three in one or Trinity” with certain dimensions) to live, appropriate atmosphere is required. The atmosphere can be said as the rules or conditions or dimensions of the particles and fundamental forces without soul, on which the “Three in one” lives. It will be proved that with respect to author as one of the reference, the termites constructed their habitat though the images also meant for others. Simply one image has multiple meanings; this is one of the specialty or property of HDS.

2. Experimental Evidence

Example 1:

This image has been taken from just outside of author’s wife home at Asarikudivilai, Tiruvattar, Kanyakumary district (say as ‘A’) in a rubber tree, say tree number 9. Below is the image which looks like the author’s face. The author is known as reference soul or point.



Figure 1

Example 2:

This image has been formed outside the college namely ‘X’¹, situated at Kannanur, Trichy district, Tamilnadu, in a tamarind tree numbered 14. The author was working in this college as Assistant Professor in mechanical engineering department. This is formed some 400 km away from example 1. The image is below which looks like the image of the author, also known as reference soul or point.



Figure 2 (used with permission)

Example 3:

These images in Figure3 (a) and Figure3 (b) is formed inside the campus of ‘X’, Kannanur, Trichy district, Tamil Nadu on royal palm trees. Both are formed in different trees situated nearby. These images are formed some 400 km away from example1 and 500 m apart from example2. The images matches the face of author or reference point’s brother who never visited

Kannanur. Thus, the image is related with reference point. The author's brother is living some 400 km away from 'X'.



(a)



(b)

Figure 3 (used with permission)

Figure (a) looks like author's brother face as a bride; this meant to say that author is seeing a bride for his brother. Termites knew author's plan.

Some other images formed on walls by rainwater diffusion as below.

Example 4:

This image is formed inside the top wall of mechanical department of 'X'. This is the image of statue of mother Mary people worship. The statue of mother Mary image on top of walls had wings (Figure4b). This image has been formed by rainwater diffusion on wall.

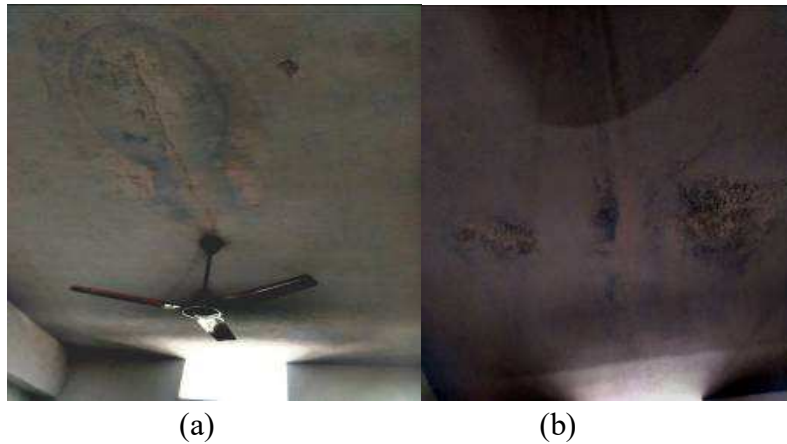


Figure 4 (used with permission)

The above image formed by termites give some information.

Example 5:

This image is formed inside the campus of 'X' on a royal palm tree.



Figure 5 (used with permission)

Example 6:

Below image formed just outside the 'X'. It is the image of one of the student in the college (image shown with permission of the student).



(a)



(b)

Figure 6 (used with permission)

Example 7:

The termite image formed inside the 'X', Kannanur, Trichy district, Tamilnadu and cloud image formed outside the termite image both being hiding each other.



Figure 7

Example 8:

This is another example of control of particles and fundamental forces(non-living beings).It is like mirror image of termites images formed, both invisible to each other, formed in an around 'X'.



Figure 8

Example 9:

These images have been taken when termites constructing their habitat:

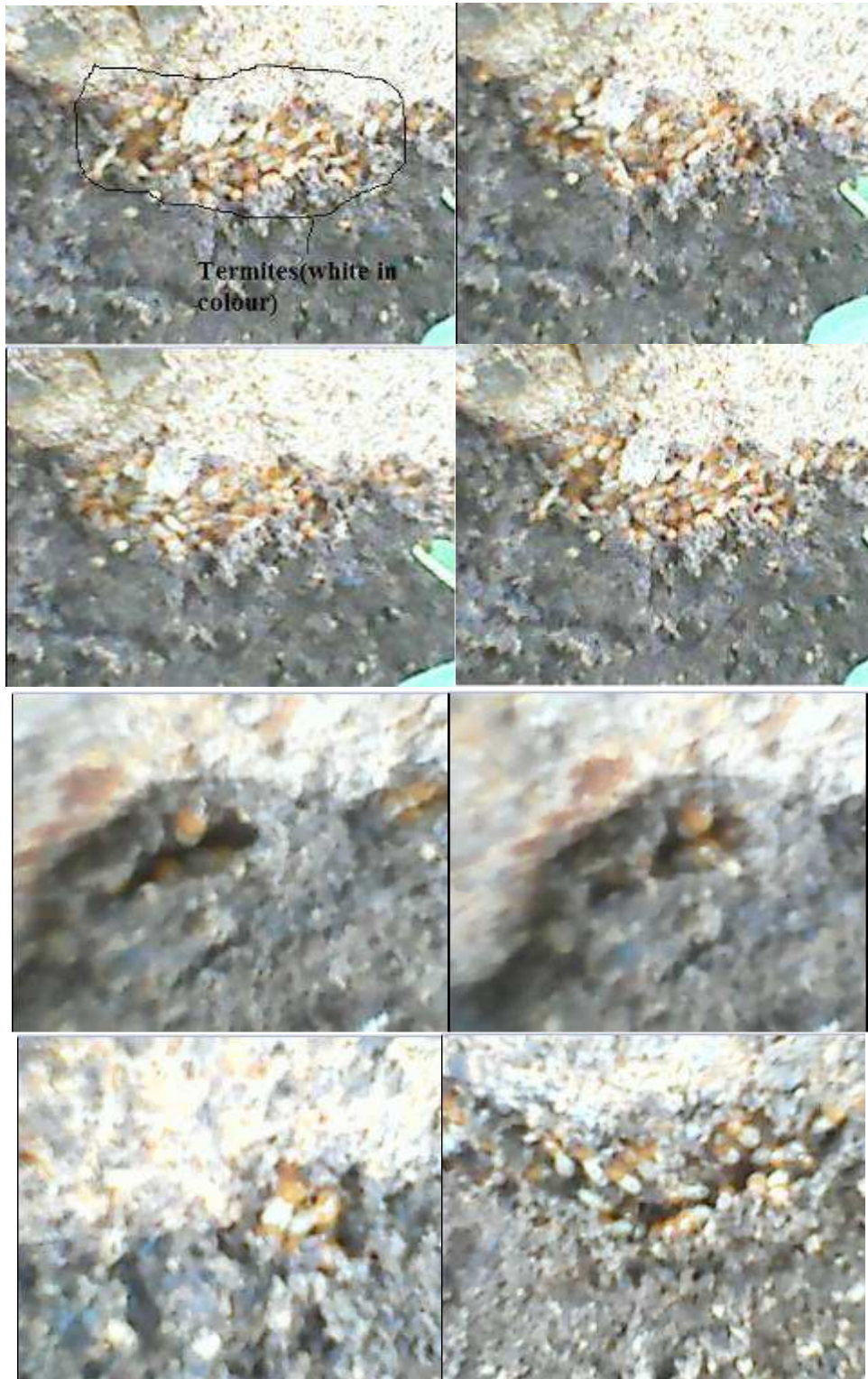


Figure 9

The termites construct without and with providing space between them(useful for explaining soul overlap).

Example 10:

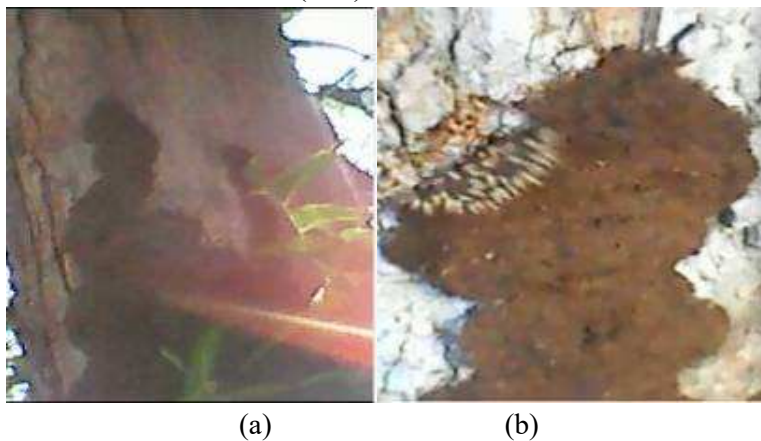
The following image has been drawn by a sand living ant like creature called “kulian or a kind of sand dweller” which drawn the word “Ram” on sand. This was taken in a college namely ‘Y’¹ in Kuttakuzhi, Kanyakumary district, where the author was working as Assistant Professor.



Figure 10

Example 11:

There are more like strange images of humans or Gods or wise people or different races of humans or might be the worlds of higher dimensional states formed by termites in an artistic way. For example the following images are artwork of particles, fundamental forces and soul formed at ‘X’ (a, b, c) and at author’s wife home (d, e).



¹ Author thanks ‘Y’ for this image as this image has been taken in their campus; they does not want to disclose their name.

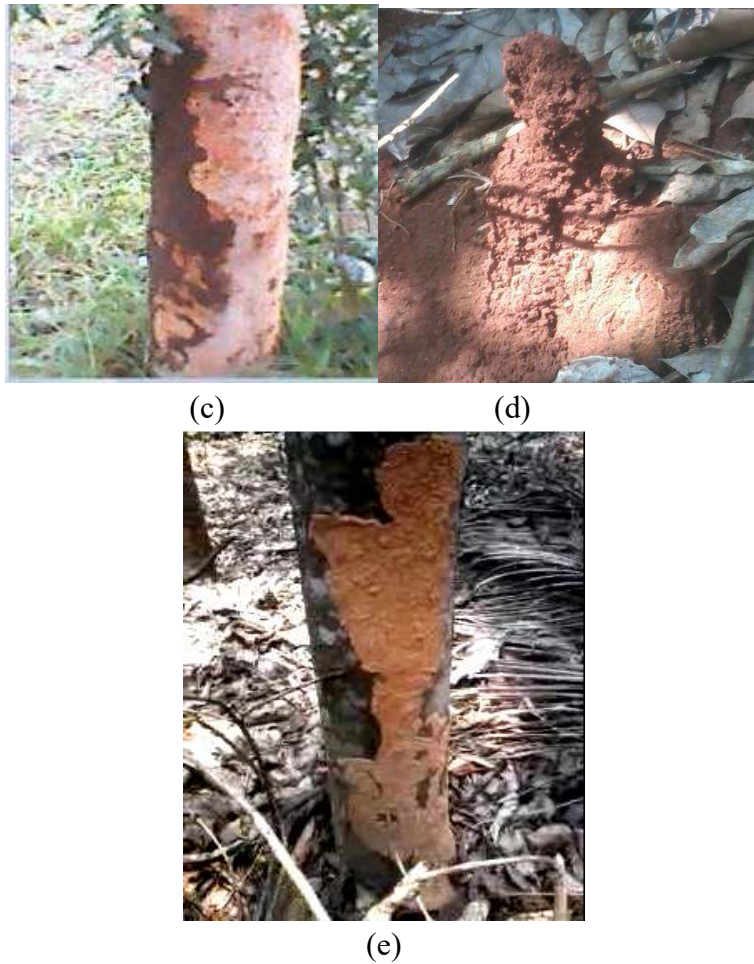


Figure 11

The last image (d) shows somebody making a statue with hand; the hand is formed by the dry leaf and termite artwork on mud. This symbolizes some meaning or passes information. Same thing figures (a), (b), (c) do. Image (e) shows an angel with wings like image.

Example 12:

If you look at the border of the image formed outside 'X', author's face is visible.



Figure 12 (used with permission)

Example 13:

The same image formed by termites in different view gives different animals like wolf, monkey and sheep. This proves the artistic ability of higher dimensional states. These images formed at Author's wife's home, namely 'A'

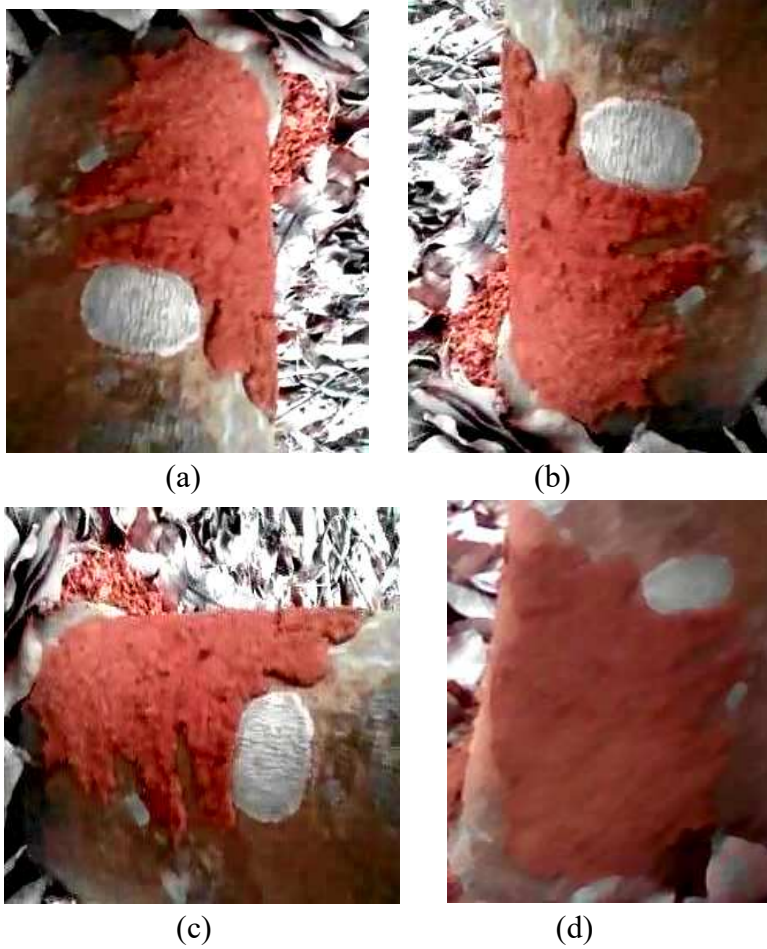


Figure 13

When photographed from another position, figure looked like a human as in (d)

Example 14:

This image formed inside the 'X' in a tree namely "punghai"



Figure 14

Example 15:



Figure 15

3. From termite images

What the author could see is the law of nature changes for the author or people, that is, with reference to the author or people, the environment changes as a function of need based (to small percentage), it acts in author or people's favor. The need is the doubt of author and the people, whether HDS exist and govern us. Nobody seen it, but this paper proves its presence. Thus, these images are beneficial to author and people. It constructs known people's image means they show their presence. Say the author, author's brother and some people are the known people, the evidences we have from the examples 1-14 prove this. There might be other examples to show the presence of HDS, but author finds it unique in termites. The HDS shows their presence. This information is very important as it shows we are not alone. On which basis they draw these images has to be explored.

There is a difference in termite's habitat construction happening with reference to these people and naturally without these people as reference. Nowhere is it seen that it constructs known human shapes or tells some information in logical order. Here with reference to author and people, this type of information transfer takes place either by termites, clouds or by other means using living or non-living beings. The images from examples above in section2 show mainly with reference to author.

Even the movements of non-living beings are governed as a function of thought. Figures (7 and 8) show this, that is, the movement of cloud particles and forming the image like that of termite images signify some meaning. Thus non-living beings too controlled. Thus, control of both living (termites being controlled) and non-living (clouds) of the universe is possible by HDS. Here the natural rule has changed (termite becoming intelligent species). For example, fluid will flow from high pressure to low pressure; when rules changes, the fluid can flow from low pressure to high pressure without any external forces.

In general, we can say these revelations or knowledge of the presence of HDS as a part of this universe becoming a perfect or steady system. A kind of evolution is happening with reference to something. A perfect system is one, which gives happiness to people, and anything is possible by this system. The artistic work by termites passes information and make the people happy showing their presence. As far as author is concerned, here the termite images give happiness showing art works, their presence, and some properties as discussed in section4. More on perfect system can be given by ¹. Based on ¹, in order to justify these unique constructions by termites, we have to assume something called dimensions. Say it is meant for particles, fundamental forces and souls, the whole universe is nothing but these three. The dimensions in particle include temperature, force etc; the dimensions in fundamental forces include force, wavelength, frequency etc; for souls happiness, sadness etc.

Evolution can be said as a part of being or becoming a steady or perfect system, basically need based. Here the need is author or people's doubt or confusion about the existence of HDS. This is being sensed by nature (HDS) and giving happiness to author and others, showing the presence of HDS, eliminating confusion. The way it has drawn images on trees soil by soil using termites, on clouds using particles and fundamental forces and rain water diffusion on walls as said in section 2 shows the HDS as part of perfect system.

These are capable of breaking the natural rules already having and the nature or surrounding (particles, fundamental forces, and souls) may evolve slowly and very fast with respect to some reference. This reference can be said as need based and the need is to eliminate the confusion of humans, that is, whether we are governed or protected by HDS. Most people believe we are governed or protected by our self. This paper will prove somebody is behind us, say it as HDS. Any of the following four is true from the construction of images in example 1 to 14.

1. The HDS oscillating or
2. it has high memory or
3. it can control living being or
4. control of environment
5. HDS travel with author and other people

The HDS oscillating- Author's brother (figure 3) is at some 400 km distance and HDS oscillating across these distances and above to draw author's brother's face and other images. If this is true, then, HDS can be oscillating in the whole universe to be a perfect system. This universe can be assumed as a perfect system to some percentage (with certain rules something possible) from the fact that the whole universe is running without collapse and with irreversible losses (that's why some percentage) for billion of years. Say this percentage perfection as a normal level, but for now from these termite images, it is above a normal level.

Thus a HDS also govern this universe, not by humans alone is another reason we have to believe in the perfect system. We have to expand this perfect system concept from the presence to HDS to know what all are magic possible if perfect system exists without rules as in this universe. The perfect system assumption leads to existence of other universes and this universe can reform into a perfect system under certain conditions in dimensions limit (say $-\infty$ to $+\infty$) with respect to particles, fundamental forces and souls, called prime factors of this universe. For other universes the assumption more than these three prime factors is valid where one may travel in high temperature and cold without losing.

High memory-It captured the author's brother image and saved in its memory perfectly, then travelled to 400 km distance to draw it. Even this is possible with the perfect system assumption. In short, everything is possible with perfect system assumption.

It can control living being- It means that HDS to overlap the termite in its particle, fundamental forces and soul(using the concept of very fundamental unit C).The soul overlap is appropriate as during construction, they looks with normal size as in example Environment control – explains how particles and fundamental forces around each termite and within their body or outer skin can be controlled by HDS. HDS travel with author and other people unknowing to them, they are many in number and are linked on some basis, and this is another possibility.

There might be more ways possible; it is beyond the scope of this paper as this paper is only proving their presence. In total, for the perfect system, anything is possible is the assumption. From the fact how termites construct homes of known shapes, a possibility of a hierarchy of souls in higher dimensions exists which split into n numbers to control each termites. Another possibility is higher dimensional states contract to the size of termites. Thus, they split or Xerox into n copies. The multiplying ability of soul (one of the possibility) is evident from the fact there are many termites involved in the construction of termite habitat. The fact that each soil particles positioned by termites by its hands is evident that the soul entered in it or oscillating soul did it as there is no increase in the values of particle and fundamental forces in visible level. Each soul in termites is linked to a commanding soul, which directs each termite, or oscillating HDS (soul) has many numbers of hands, which position the sand particles. This is one way. Other way is that environment of each termite changes (atomic level) causes termites to turn making comfort or discomfort, which made the particles to get positioned in particular place and direction.

A perfect engineering is happening here, guided by somebody. Thus two way control is possible to draw known images with respect to a reference; the first one being soul level control of termites and the second one being the control of particles and fundamental forces (environment). From the fact that calculated forces applied by humans, helps to construct definite shapes rather than the random construction by the application of random forces, humans(only when souls live in body) can construct definite shapes when they carry souls with intelligent. Thus, souls only forcing or directing the particles to construct definite shapes from the example of humans constructing definite shapes, but anything are possible with perfect system. Soul is oscillating is evident from the fact that my brother even has not come to 'X', but how his face is drawn by termites shows soul is oscillating across distances and controls the particle and fundamental forces(other ways also possible).

The fact that trees are growing and no movement is the example of life without movements. The term life used to mean soul and its movement voluntarily in a place we like. Thus, soul can exist in other form in plants. In animals and other living beings, it exists in another form. Thus there are chances they exist in non-living beings too in sleep mode, exchanging information, the best example being, the particles and fundamental forces receiving information(as in clouds forming known shapes with reference to author) and making movements accordingly. Known shapes in clouds, termite habitat and other living and non-living beings telling an information or story

takes place with reference to author or a human soul where ever the soul of author/human goes(just trying to be perfect system).The naturally occurring construction of termite home as a function of time does not takes place. The fact that soul controlling particles and fundamental forces proves that natural disasters can be controlled if this oscillating soul thinks.

Moreover, from the fact that for making known definite shapes an intelligent to differentiate the things is required. This is another proof that the higher dimensional intelligent states only drawing the images. Thus a sixth sensed or more system with the knowledge of past, present and future only drawing the known image shapes with reference to author/people, giving information. We see from our example of being human and also animals and plants, only when the soul is integrated with particles and fundamental forces, the multiplication (reproduction) is possible. The particles and fundamental forces do not multiply automatically in the rule of region. Thus in the outer space, it appears soul indirectly integrated with particles and fundamental forces only making the particles and fundamental forces to multiply to expand the universe; for a perfect system, this should be possible. The above fact is true from the assumption soul is in sleep mode in particles and fundamental forces and also from the state before big bang soul oscillating only created particles(everything possible for perfect system).Thus there are possibility soul hidden in particles and with perfect system even particles and fundamental forces could be converted into soul or to exist in three in 1 form(the flesh).Anything is possible with a perfect system is the assumption and termites evolve to that state.

After constructing the termite habitat, the way the termites eat the food inside the habitat also happened logically to give some information or telling a story as shown in figure15 below. These images formed in author's wife home (figure 15a) and a place near Thickurichy (figure 15b and 15c), both in Kanyakumary district.



(a)



(b)



(c)

Figure 15

Here also while eating the food, termites makes definite known shapes. In order to make the logical patterns by eating away tree layers, there should have been a control of senses of termites. The tendency to eat the food at right time and right amount with reference to making the image has been made. Say the 5 senses of termites have been used by overlapping the soul of termite by higher dimension or environment around the termites controlled. The food digesting and distributing energy in cells is being controlled. The time being shortened or lengthened based on the reaction rate of digestion and energy distribution in cells of termites. Also only, it ate particular layer food in trees as it was controlled to stop eating. A chemical reaction motivated inside the termites in order to eat right amount of food. Same thing is experienced with author or reference point. These happen as a function of need or to have some control or to give some information, with reference to author or some other reference points. The chemical reaction inside the body of termites is being controlled by some unknown forces.

If there is no soul in our body, the tendency to eat more or excrete won't be caused. Thus, in the base of soul, the chemical reaction (of particles and fundamental forces) is being controlled to

cause the eating of more or less by termites to give some information or tell a story. In order soul to live, energy is required, thus at the same time, without affecting the soul, that is, giving energy to it also happens. Thus, both soul and particle-fundamental forces combination construct the image with reference to humans as this information is meant for humans. This shows the more possibilities of soul level control or soul overlap.

4. Properties of higher dimensional states noticed using termites

1. Overlapping of souls

If termites has to construct known human faces, the soul which directs (proved soul only control in the discussion below), it has to control the movements. In living beings, the movements take place in a desired direction because of the existence of soul. Thus a soul level dimensional change occurred in termites, that is, higher dimensions in soul level overlapped the souls of termites. The figure 19 taken during the construction, shows only termites, not anybody else means soul only controlled and it has to be done with overlapping of soul.

2. Controlling of particles and fundamental forces

The possibility for termite to construct the known image is that the environment or dimensions of particles and fundamental forces around or inside the termites changed to move the termites in a particular direction, which made the termites to construct known faces. In addition, the images on clouds show a control of particles and fundamental forces. The images on walls due to rainwater diffusion show the control of particles and fundamental forces.

3. Invisibility

4. Independent of distances(Author's brother is some 400 km apart, but without seeing, the face structure drawn precisely as shown in figure 3).

5. Knows the things without seeing (author's brother image is 400 km apart drawn without seeing).

6. Ability to split in soul level to any number (based on termite souls are overlapped in figure 19), this will prove a hierarchy of HDS.

7. They knew our plans(figure 3 showing author's brother as bride)

8. Highly an artist as example images shows

9. Highly accurate as without seeing images across 400 km distance. It shows they are oscillating in nature or have high memory.

10. Less time it takes for construction.

11. Ability of maximum multitasking allowed by rules of nature (evident from the fact in 3D space one image means multiple meanings (e.g. figures in example 1-14) to author and others.

12. Both weightless(the termite's being weightless while constructing as HDS in soul form weightless) and take weight(perfect system assumption as in section 6 or when it exist in particle, fundamental forces form)
13. The HDS is attached to each person with their body in invisible form, which is watching everything around the author very precisely and accurately,have very high memory power,linked to all other HDS around each living beings and non-living beings.Say as a xerox copy of author in invisible form attached to him,which have higher abilities and power than ordinary copy of author in visible form.The invisible Xerox copy evolves gradually making the author's present world copy to know everything around him to a small percentage.This invisible copy only makes link with termites to draw known images and other HDS attached to it to express.
14. Each living and non-living beings have HDS attached to it unknowingly in invisible form.
15. They exist as both male and female or independent of sex as both male and female termites are involved in the construction of habitat..
16. There might be more unknown.

5. Rain water diffusion on walls

Another example of particles and fundamental forces controlled is example of diffusion of rainwater on walls to draw known shapes and give some information as in figure (4).Here diffusion of rain water to cause wetting is controlled using time and temperature. After diffusion, the enamel of wall how it should appear extending and contracting to give the Mary image is viewed early by higher dimensional states and accordingly they control the intensity of diffusion of rainwater. Here the environment is being controlled. A perfect atomic level control has taken place here. Each atoms of cement or concrete particle or rain water and surrounding air is being controlled to cause wetting as a function of temperature. The temperature of each atom is different and the temperature extends the time. This is example of atomic level control of HDS. This example proves environment control of termites also possible without soul overlapping.

6. Perfect System

Anything possible with the perfect system is the assumption. The perfect system concept assumes a very fundamental unit of the universe C distributed all over this universe and beyond continuously if universes exist and that why it knew everything. In our universe C exists as 'Trinity form (Cpfs)', that is, each C can exist as particle, fundamental forces, and soul (prime factors).There is space in each C for these prime factors. In other universe, there might be more prime factors than these three. The prime factors can exist in combinations of 3, 2, or

individually. Flesh is example of when they exist in combination of 3 (particle, fundamental forces and soul). Non-living beings are the example of particle and fundamental forces. Soul alone is example of HDS, which is invisible. Each parameter in this world or senses is called dimensions. In a perfect system, particles have '1' number of dimensions each ranging from $-\infty$ to $+\infty$, for example temperature, pressure etc.

Fundamental forces have m number of dimensions each ranging from $-\infty$ to $+\infty$, frequency, wavelength etc. For soul 'n' number of dimensions ranging from $-\infty$ to $+\infty$, for example happiness, love kind etc. l, m, n for this universe is limited in numbers, but for perfect system it is infinity in number. We from the examples of this universe see some dimensions enhance/reduce values of dimensions causing comfort to us and with reference to these are known as +ve dimensions and some dimensions reduce/enhance the dimensional values causing discomfort with reference to us, we call it as -ve dimensions. One, which causes irreversibility, can be said as causing discomfort and forward time. One, which causes reversibility, can be said as causing comfort and both forward and reverse time.

Thus, one, which causes reversibility with comfort, is +ve dimensions and one, which causes irreversibility with discomfort, is -ve dimensions. When the soul exists in our body we can move in any direction we want, thus soul can be said as primary. Thus in perfect system as there are l, m, n in infinity in number and each vary from $-\infty$ to $+\infty$, everything is possible. Thus HDS acting on termites has more l, m, n and even it exist as invisible. Thus, they draw the known images in a way they want controlling souls (termites), rainwater diffusion, and clouds etc. Simply anything is possible by a perfect system explained here. The detailed explanation of perfect system is beyond the scope of this paper. Perfect system assumes only after this world perfection will be achieved 100 percentages though there are cases, it can be achieved to small percentages. These termite revelations can be said as achieving it to small percentage (giving +ve energy to author and people showing the presence of HDS).

After this world soul only goes off, thus soul level dimensions or parameters should be studied for perfection. In order the perfect system assumed not handicapped it should not cause negative effect on others permanently (irreversible). Thus +ve soul level dimensions only should be the reason for perfection, but reversible -ve soul level dimensions acceptable within a limit with the purpose of adding flavor (for fun, make +ve work done etc). Example of +ve soul level dimensions include love, kindness etc and -ve soul level dimensions include jealous, rough pride etc. Thus termites expressing in an extraordinary way can be attributed to attaining perfection with reference to +ve soul parameters of author/humans. It happens above a normal limit to a small percentage. This world is assumed to be an experimental set up for each human, thus showing more perfection may collapse this experimental set up. One soul, which passes in the experiment, may attain 100 percent perfection.

6. Summary

Thus in this paper a perfect dimensional system example (termites habitat construction) is defined to a certain percentage. Thus, the perfect system proves the existence of other universes without rules. Based on whatever perceived by our senses only we are imagining and writing. Thus in ancient history period when people chanting mantra, the environment changing cannot be denied based on perfect system. From the images, it is proved that the higher dimensional states are oscillating in this universe and just like a dog can know or identify a thief with its sensing power without seeing, the higher dimensional states knew everything using some dimensions or senses and can also control particles, fundamental forces and soul.

The each dimensions explained could be said as information, thus this universe exist as information in particles, fundamental forces, and soul. From the images formed by termites, clouds and on the wall, the higher dimensional states can exist in combinations of soul, particles, and fundamental forces. Thought waves developed from souls can change the dimension of particles, fundamental forces, and soul for a perfect system as evidenced by cloud shapes, termite images, and rainwater diffusion on walls. Thought waves are nothing but words originated from souls; it can integrate or multiply to any limit, say infinity. This discussion is beyond the scope of this paper. Thus, the universe is full of words/information of higher dimensional state/states, which knew everything happening in this universe. The evidences being the images by termites, rainwater-diffused images of famous people rolling inside the minds (thoughts) of people, cloud shapes etc. What is bounded inside the minds of humans drawn by higher dimensional states using particles, fundamental forces, and soul? Even without seeing, they knew everything. Say in particles and fundamental forces, the soul are in sleep mode, that why they do not make moves automatically. This paper is the one prepared with the help of higher dimensional states in one sense.

The important conclusion that the human has to take from this conclusion is intelligent is nothing, it happens to humans by luck. This is because from the termite story or revelations by higher dimensional states, even the 5 sensed termites acts as if they have intelligent as it construct habitats in a very artistic manner, a single image gives many meanings. It is a matter of having many l, m, n number of dimensions in particles, fundamental forces and souls.

This paper just proves the existence of higher dimensional states ahead of us. More over the explanations are based on the human sense or eyes, simply based on our perception in this state. In the human sense, we discovered only particles, fundamental forces, and soul. There might be more that this trinity form, which are invisible to human.

Information is being passed to the author using particles, fundamental forces, and soul. The need that has arisen to the author is the objectivity or questions or why the things exist (such

confusion), this need is satisfied by HDS, proving their presence. This gives confidence to author and others that somebody is present behind and benefit the author, erasing the confusion that what will happen after this world.

Author explains these revelations assuming a perfect system. As these revelations clear the doubts of author and gives confidence or power to him, from author's point of view, the HDS is the positive force only. More over the termite images pass beautiful information to human, this information is much essential for unity or integrity. HDS may be a single or have a hierarchy. A kind of intelligent system (termites becoming artists) evolved very fast with respect to some reference (the need or confusion of people); It needs further understanding of our universe considering soul as a parameter, which is beyond the scope of this paper. It is also quoted the reason for with reference to what termites make known faces, i.e, +ve soul level dimensions.

This paper provides two main things, one is the evidence of existence of higher dimensional state/States, and the second is the possibility of a perfect system with anything possible by HDS. These HDS can be called as Aliens life hidden in our universe unknowing to us! This paper integrates physics (metaphysics), chemistry (internal communication of termites by chemicals) and biology (evolution of intelligent) and challenges the science saying something beyond what we see and feel. A sudden evolution of intelligent of termites is shown and thus it proves not only the slow evolution, but fast evolution is also possible, astonishing the scientists; this breaks all our previous beliefs in evolution. All these happened with reference to something which the author of this paper argues as +ve soul level dimensions through different people may argue in different ways.

References

- Burago Sergey Georgievich (2017), About the theory of the Big Bang. DOI:10.13140/RG.2.2.26288.35840
- Johan Dahlbeck (2018) At the wake, or the return of metaphysics, *Educational Philosophy and Theory*, 50:14, 1462-1463, DOI: 10.1080/00131857.2018.1458783
- Attila Grandpierre, Deepak Chopra, P. Murali Doraiswamy, Rudolph Tanzill, Menas C. Kafatos (2013) A Multidisciplinary Approach to Mind and Consciousness. *NeuroQuantology*; 4:607-617
- Robert Prentner (2018) Process Metaphysics of Consciousness. *Open Philosophy* ; 1: 3–13
- The Monadology (1714), by Gottfried Wilhelm LEIBNIZ (1646-1716). *Available online at:* <http://tinyurl.com/ab8ae8e>
- Dino Jakušić (2017) The Possibility of Ontology. Phd thesis, University of Warwick, Department of Philosophy.
- L. S. Shashidhara T. N. C. Vidya (2017) Contemporary issues in evolutionary biology, Vol. 96, No. 3, pp. 399–400, DOI 10.1007/s12041-017-0806-7.

Anne-Geneviève Bagnères, H. Hanus(2015) Social recognition in invertebrates: The knowns and the unknowns(pp.193-248), DOI: 10.1007/978-3-319-17599-7_11

James F A Traniello, Reinhard H. Leuthold(2000) Termites: Evolution, Sociality, Symbioses, Ecology(pp.141-168), DOI: 10.1007/978-94-017-3223-9_7

Ahmad Pervez (2018), Termites and Sustainable Management (119-143), DOI: 10.1007/978-3-319-72110-1_6

J. M. Dangerfield, T. S. McCarthy and W. N. Ellery(1998) The Mound-Building Termite *Macrotermes michaelseni* as an Ecosystem Engineer, *Journal of Tropical Ecology*, Vol. 14, No. 4, pp. 507-520

Seán Ó. Nualláin(2008) Subjects and Objects: Metaphysics, Biology, Consciousness, and Cognition, *Biosemiotics*, Volume 1, Issue 2, pp 239–251

F. Halzen and A. Martin, *Quarks and Leptons(1984): An Introductory Course in Modern Particle Physics.* Wiley

J. Polchinski(1998) *String Theory.* Cambridge Univ. Press